

BIO-FIGHTER® XL

Features

- Lamps up to 5 feet long
- Moisture resistant lamp connection
- Patented high-output germicidal lamps
- Large polished aluminum reflector
- Mounts in duct or AHU
- 120V or 277V electronic ballast
- Multiple conduit knockouts
- ETL safety agency listing to UL 1598
- Limited lifetime warranty
- FDA Class II medical device listing



Large commercial coils require large UV-C fixtures to maximize surface area coverage energy efficiently. The Bio-Fighter® XL is uniquely qualified for extra large applications with lamp lengths up to five feet and a class-leading reflector surface area to cost effectively apply a high dose of UV-C energy. The XL series is equipped with a heavy duty T6 high output, singled ended lamp that contains protective cathode rings to ensure filament longevity. The environment where XL fixtures are deployed can have high relative humidity levels so a protective boot is in place over the quick connect lamp connection to avoid corrosion.



Extra long lamps , up to 5 feet, maximize exposure over large commercial cooling coils.

Highly polished aluminum reflector focuses more UV-C light toward coil.

Moisture boot seals lamp connections against moisture in high humidity environments.

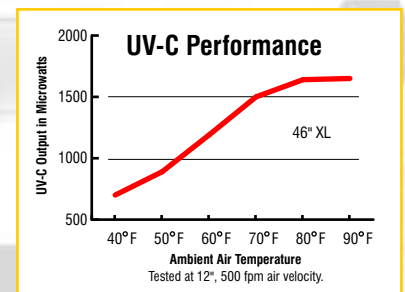
Large T6 lamps are custom designed with cathode rings to maximize UV-C power and efficiency.

Multiple conduit locations on chassis allow for a flexible installation in a variety of applications.

Powerful electronic ballast. 120V or 277V options

User-Friendly Lamp Design

Maintenance is easier with lamp connections at only one end.



The Bio-Fighter® XL assists in preventing the growth of micro-organism contaminants in the large commercial cooling coils. To ensure maximum effectiveness, install and maintain the Bio-Fighter® in accordance with installation and maintenance instructions.

Dimensions: See Fig.1

Weight:

- XL 21 - 3.9 lbs.
- XL 33 - 4.6 lbs.
- XL 45 - 6.4 lbs.
- XL 60 - 8.3 lbs.

Lamp:

9000 hour lamp life.

Listings:

ETL Safety Agency - File # 2002554
 FDA Class II Medical Device
 FIFRA - File #73316

Electrical:

The XL uses an electronic ballast available in either 120V or 277V power supplies. The unit is to be hard-wired to an appropriate electrical service in accordance with NEC.

Power Ratings: 120V 50/60 Hz. 277V 50/60 Hz.

Full Load Amps: 120V - 1.15 Amps. 277V - .50 Amps.

Temperature:

45° F - 150° F (Outside of duct).

Lamp:

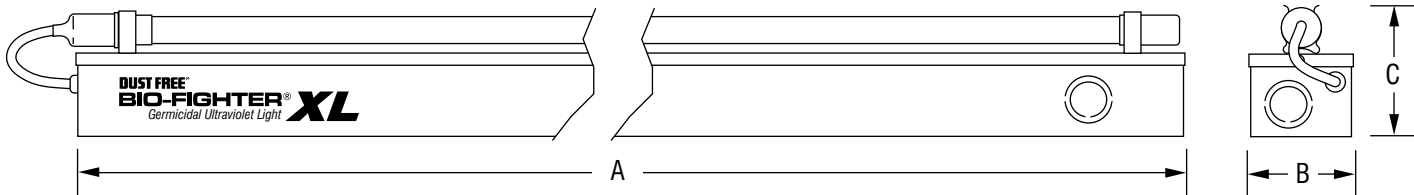
9000 hour lamp life.

UV-C Output ($\mu\text{w}/\text{cm}^2$):

XL 21	800
XL 33	880
XL 45	890
XL 61	850

Tested at 50°F, 12", 500FPM air velocity.

Fig. 1 Dimensions of XL.



MODEL	DIM. A	DIM. B	DIM. C
XL 21	24"	3.375"	2.5"
XL 33	36"	3.375"	2.5"
XL 45	48"	3.375"	2.5"
XL 60	64"	3.375"	2.5"

Specifications subject to change without notice.

Qty	P/N	Description	VAC
	06170	Bio-Fighter® XL 21"	120
	06172	Bio-Fighter® XL 33"	120
	06174	Bio-Fighter® XL 45"	120
	06176	Bio-Fighter® XL 61"	120
	06171	Bio-Fighter® XL 21"	277
	06173	Bio-Fighter® XL 33"	277
	06175	Bio-Fighter® XL 45"	277
	06177	Bio-Fighter® XL 61"	277

Customer	_____
Project	_____
Engineer	_____
PO Number	_____